



# Fetal Doppler System Vascular Doppler System

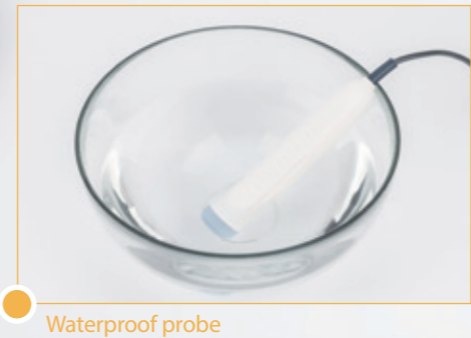
Handheld Doppler  
Desktop Doppler  
Vascular Doppler

 **bistos**

# Fetal Doppler



**BT-200**  
Hi bebe



Waterproof probe

## Various Display type from low to medium budget



## Various Frequency option

2MHz or 3MHz is available upon request.  
(200T : 3MHz)

## Waterproof probe

Even the most basic Doppler has waterproof probe suitable for water delivery. (IPX7)

## Complimentary carrying pouch

All handheld Doppler comes with carrying pouch

## FHR and sound management

Dedicated PC software enables save and manage FHR and heart sound data



# Fetal Doppler



Interchangeable probe



**BT-220**  
Hi bebe S

## Trend display

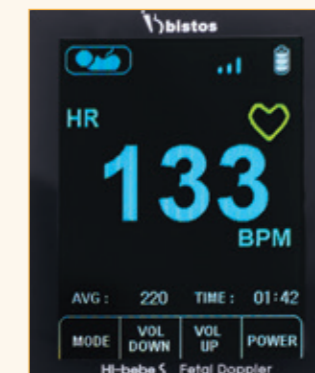
Large color LCD enables trend of FHR on screen.

## Acoustic Stimulator

Stimulate sleeping fetus to acquire more accurate FHR.  
High(100Hz) / Low(75Hz)

## Interchangeable probe

2MHz or 3MHz probe can be used on one main unit



220C



220L

## Recharging kit (Optional)

Just plug-in to microUSB cable recharge the battery and no need to change disposable battery.

## Desktop Fetal Doppler



## Vascular Doppler



**BT-250**

**BT-200**  
Hi dop

### Low Noise & Clear sound

Louder and better sound than handheld doppler. (5W)

### Trend data save

Store data up to 4 hours and up to 15 patients.

### Large display

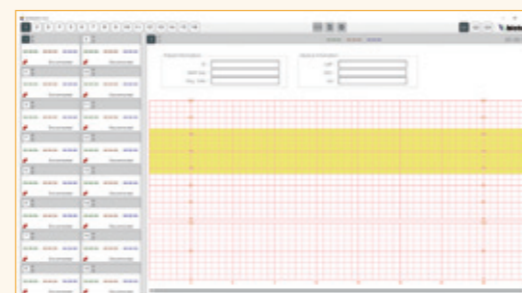
Larger display than handheld Doppler enables to show more information on the screen.

### Portability

Rechargeable battery and compact design makes portable use.

### Central Monitoring Software

Works on BCM-350 software along with other Fetal monitors.



### Interchangeable probes

4, 5, 8MHz probe is available for multiple application.

4~5 MHz : Femoral, popliteal, subclavian artery and deep vein

8Mhz : dorsal pedal, radial, orbital artery and vein close to surface

### High sensitivity

Detect small vessel location and Sound very easy by even unskilled patient.

### Diabetic foot application

Optimized vascular Doppler for constant monitoring diabetic foot.



# BISTOS Fetal Dopplers and Vascular Doppler Technical Specification

● Standard ○ Option

Category	Fetal Doppler		
Model	BT-200		
Order code	200S	200L	200C
Frequency (MHz)	2	2	2
Detection Range (BPM)	50 - 240	50 - 240	30 - 240
Audio Output (W)	1.2	1.2	1.2
Headphone Output	●	●	●
Interchangeable probe			
Waterproof probe	IP X 7	IP X 7	IP X 7
Display type		Mono	Color
Trend display			
Trend saving			
Patient ID			
Event Mark			
Quick Guide			
Multi Language			
Acoustic Stimulator			
Adult Heart Rate (BPM)			
Body Fat Measurement			
Battery Type	2 X 1.5V AA	2 X 1.5V AA	2 X 1.5V AA
Battery Run Time (h)	5	5	5
Rechargeable Battery	○	○	○
BCM-200 Software	●	●	●
BCM-350 Central Monitoring Software			
Weight (g)	190	190	190
Dimensions (mm) Main Unit (HxWxD)	128 X 75 X 26		
Carrying Pouch	●	●	●
Optional Accessories			
Warranty (Main unit)	1year	1year	1year

Fetal Doppler			Vascular Doppler	
BT-200	BT-220		BT-250	BT-200
200T	220L	220C	250	200V
3	2 or 3	2 or 3	2	4, 5, 8
50 - 240	50 - 240	50 - 240	30 - 240	50 - 240
1.2	1.2	1.2	5	1.2
●	●	●	●	●
	●	●	●	●
IP X 7	IP X 7	IP X 7	IP X 7	IP X 2
Mono	Mono	2.4" Color	3.2" Color	Mono
		●	●	
			4 Hours	
			●	
			●	
			●	
	●	●		
		40-200		
		●		
2 X 1.5V AA	2 X 1.5V AA	2 X 1.5V AA	3.7V Li-ion	2 X 1.5V AA
5	5	4	5	5
○	○	○	●	○
●	●	●	●	
			●	
190	190	200	1,100	190
128 X 75 X 26	132 X 66 X 27		90 X 250 X 118	128 X 75 X 26
●	●	●	○	●
	Rechargeable kit	Rechargeable kit	Clamp	
1year	1year	1year	2year	1year



## **BIO SIGNAL TOTAL SOLUTION**

### **Medical Design & Technology Srl**

**Via sartirana 14  
20017 RHO (Milano)**

**[www.mdtmedical.com](http://www.mdtmedical.com)**

**[infomdtmedical.com](mailto:infomdtmedical.com)**

**Tel. 02.89450862**